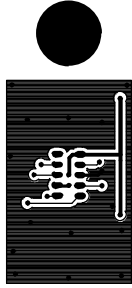




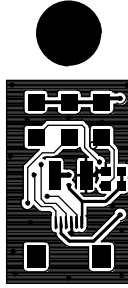
SiLabs®
Si114X MEP
Rev2.0



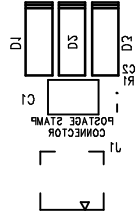
PRIMARY SILKSCREEN



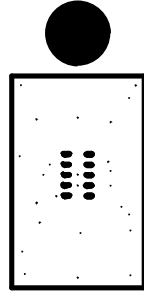
PRIMARY SIDE



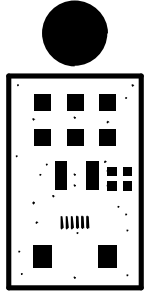
SECONDARY SIDE



SECONDARY SILKSCREEN



PRIMARY SOLDER MASK



SECONDARY SOLDER MASK

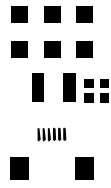




0000
0000



PRIMARY SOLDER PASTE

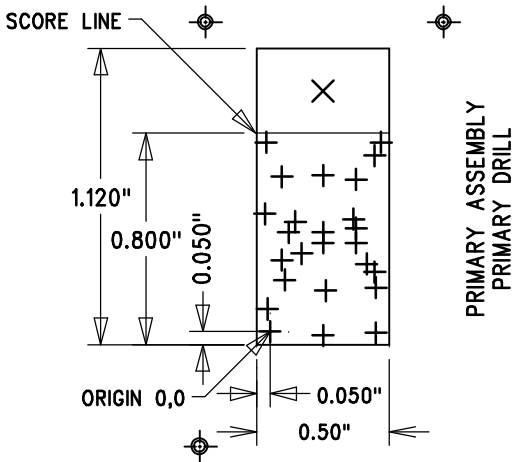


SECONDARY SOLDER PASTE

SIZE	QTY	SYM	PLT	TOOL	TOL
0.010	25	+	P	1	+0/-0.010
0.125	1	X	P	2	+/-0.003

NOTES : UNLESS OTHERWISE SPECIFIED

1. MANUFACTURE IN ACCORDANCE WITH IPC-6012, TYPE 3, CLASS 2.
2. END PRODUCT FEATURES SHALL NOT VARY MORE THAN 20% FROM ARTWORK ORIGINALS.
3. MATERIAL SHALL BE COPPER CLAD FR-4, NEMA GRADE PER IPC-4101/26, COLOR NATURAL.
4. COPPER WEIGHT SHALL BE 1.0 OZ./SQ. FT. BEFORE PLATING.
5. ALL PLATED THROUGH HOLES SHALL HAVE A MINIMUM OF 0.001" COPPER.
6. DRILL HOLE TOLERANCE AFTER PLATING SHALL BE ± 0.003 ".
7. MINIMUM ANNULAR RING SHALL BE 0.001".
8. MINIMUM ANNULAR RING AT EMERGENT CONDUCTORS SHALL BE 0.003".
9. FINAL PCB THICKNESS SHALL BE 0.062" $\pm 10\%$.
10. WARP/TWIST SHALL NOT EXCEED 1.0%
11. FINISH SHALL BE LPI, BLUE SMOBC, ENIG BOTH SIDES.
12. SILKSCREEN WITH NONCONDUCTIVE WHITE EPOXY INK.
13. REFERENCE ADDITIONAL FAB NOTES IN FILE README.TXT
14. NO VENDOR MARKINGS OR ALTERATIONS SHALL BE PERMITTED ON ANY METAL OR SILKSCREEN LAYERS.



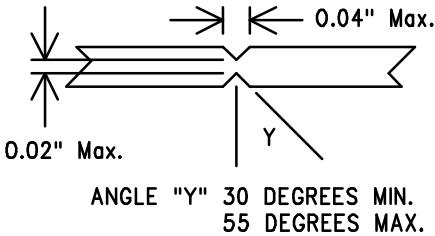
LAYER STACKUP


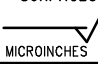
FILE NAMES

SILKSCREEN TOP	114XMEP_PSS.PHO
SOLDERMASK TOP	114XMEP_PSM.PHO
TOP	114XMEP_PRI.PHO
BOTTOM	114XMEP_SEC.PHO
SOLDERMASK BOTTOM	114XMEP_SSM.PHO
SILKSCREEN BOTTOM	114XMEP_SSS.PHO

SCALE: NONE

SCORING DETAIL END VIEW
(NOT TO SCALE)



UNLESS OTHERWISE SPECIFIED			THIS DOCUMENT CONTAINS PROPRIETARY INFORMATION AND SHALL NOT BE DUPLICATED OR USED FOR ANY PURPOSE OTHER THAN THAT FOR WHICH PROVIDED OR DISCLOSED IN WHOLE OR IN PART, WITHOUT THE WRITTEN CONSENT OF SILICON LABORATORIES, INC..			COMPANY: <div></div> 400 W Cesar Chavez AUSTIN, TX 78701 (512)416-8500 www.silabs.com								
DIMENSIONS ARE IN INCHES AND APPLY AFTER FINISH DIMENSIONS IN BRACKETS [] ARE IN MILLIMETERS INTERPRET DRAWING PER MIL-D-1000														
TOLERANCES														
HOLE TOLERANCES PER 78027														
DECIMALS .XX +/- .XXX +/-						ANGLES +/-			SURFACES <div></div> MICROINCHES					
PART TO BE FREE OF BURRS						DESIGN			AS			10/15/13		
						LAYOUT			P.B.			10/15/13		
BREAK EDGES <div>MAX</div>			BEND RADIUS <div>MAX</div>			BEND RELIEF <div>MAX</div>			DO NOT SCALE DRAWING					
						SIZE A			PART NUMBER: Si114X MODULE EVB Postage Rev2.0					
						SCALE 1:1			FABRICATION DRAWING			SHEET 1 OF 1		

